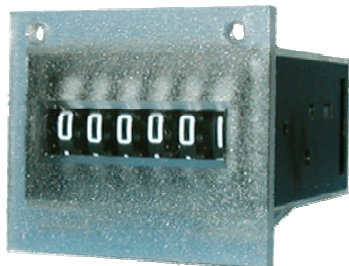


# Pulse counter

SI-63



## Highlights

- price competitive counter
- 6-digit totalizer
- low power consumption

## Applications

- general event counting
- vending
- gaming
- copiers

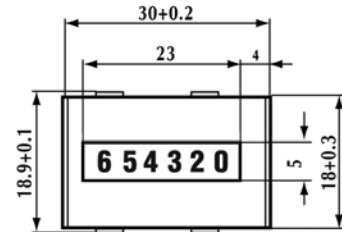
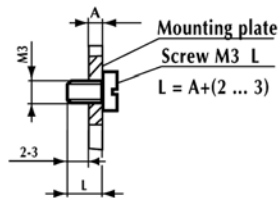
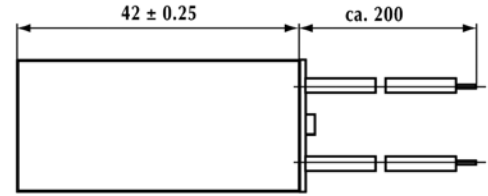
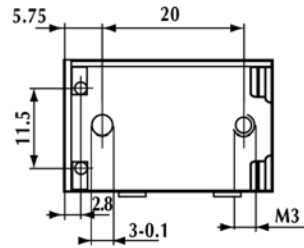
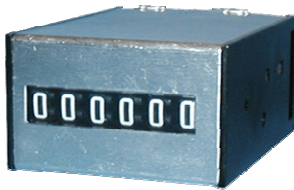
Mechanical data		Electrical data	
Counting	adding without reset	Operating voltage	6V, 9V, 12V, 24V DC $\pm$ 10%
Display	6 digit	Power consumption	1 W
Digit height	4 mm – SI-63.0 3,5 mm – SI-63.1 and SI-63.2	Pulse duration	50 ms
Digit color	white on black	Pulse interval	50 ms
Housing	aluminium – SI-63.0 plastic – SI-63.1 and SI-63.2	Max. counting speed	10 pulses/sec
Operating life	10 x 10 <sup>6</sup> pulses	Cycle duration factor	100%
Weight	ca. 35 g	Connection	flying leads ca. 200 mm
Mounting versions	different		
Ambient conditions			
Operating temperature	-10 <sup>0</sup> C .. +55 <sup>0</sup> C	Protection	IP20
Storage temperature	-20 <sup>0</sup> C .. +70 <sup>0</sup> C	Relative humidity	max. 80% at +25 <sup>0</sup> C

## Ordering

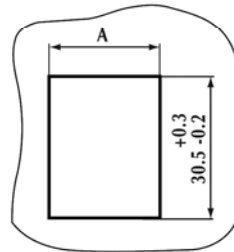
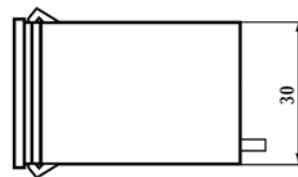
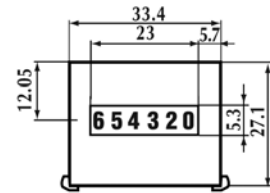
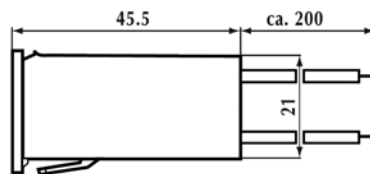
Model	Description
SI-63.0	back screw mount, aluminum housing
SI-63.1	snap fastener mount, plastic transparent housing
SI-63.2	2-screw snap fastener mount, plastic transparent housing

\*voltage to be specified

# Pulse counter


**SI-63.0**

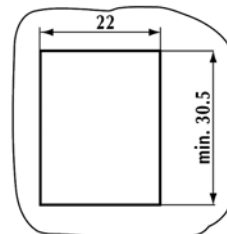
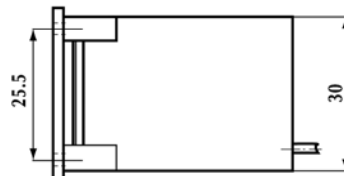
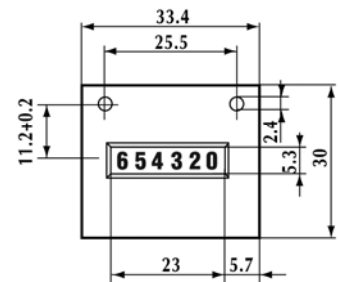
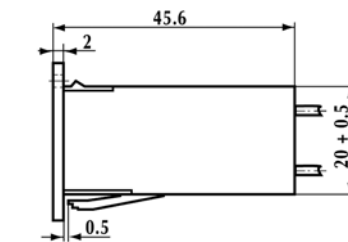
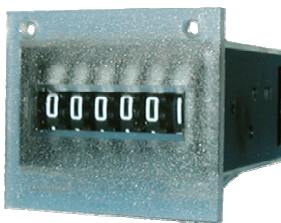
Mounting with fork clamp and cutout.



Cutout thickness	A
1.0 to 1.4	24.2 to 24.6
1.4 to 1.6	24.3 to 24.7

**SI-63.1**

Mounting with fork clamp and cutout.


**SI-63.2**